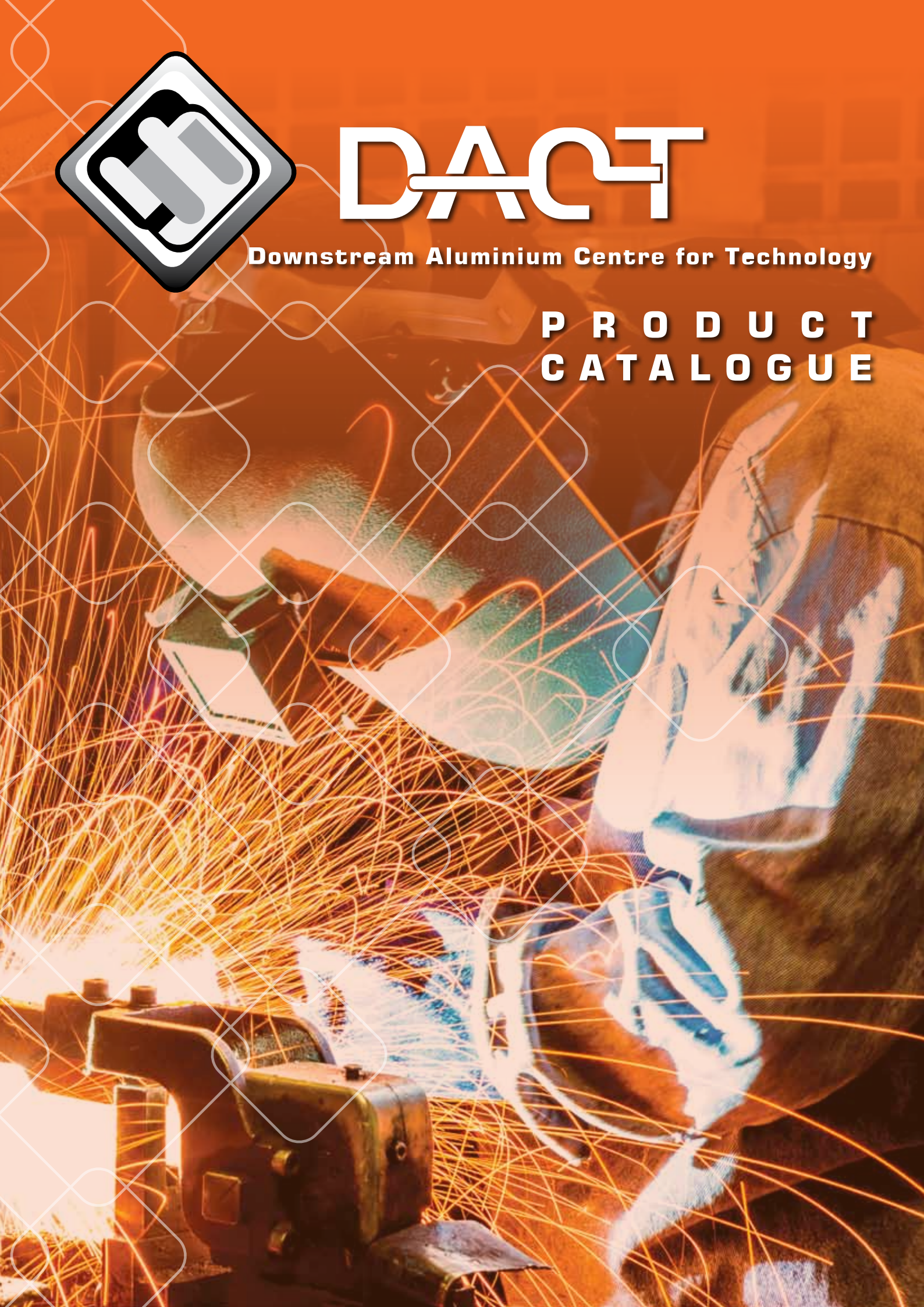




DACT

Downstream Aluminium Centre for Technology

**P R O D U C T
C A T A L O G U E**



OUR HISTORY

The Downstream Aluminium Pilot Project (DAPP) was established in 2000 as an ancillary project of the Zululand Chamber of Business Foundation.

This initiative then prompted the Department of Trade and Industry to contribute to the aluminium industry and on the 26 July 2002, the Downstream Aluminium Centre for Technology (DACT) was launched with an official cheque handover of R 2.5 million.

The biggest portion of this funding was used on the customised building with the balance of the money used for equipping the facility and obtaining patterns and dies for the manufacture of a range of cast aluminium products.

The Downstream Aluminium Pilot Project (DAPP) was officially launched in July 2002, with the main objective being to assist potential entrepreneurs from local and emerging

communities with establishing manufacturing enterprises and assisting them from start up to sustainability.

DACT has learnt some valuable lessons during the course of its operations. Although the vision and mission has remained the same over time, the more specific aspects are adjusted according to the changes in the environment and new situations that arise.

DACT is registered as an independent legal entity in terms of Section 21 of the Act in 2005, with an independent and voluntary board of directors acting as its custodians.

Seven staff members are employed specifically to assist clients and to provide support. DACT is registered with the Department of Social Development as a public Benefit Organisation.

VISION STATEMENT

To be a nationally recognized centre of competence that develops and supports innovative and technology based SMME's in the Aluminium and Metal industry.

MISSION STATEMENT

To mentor, coach and assist innovative technology based SMME's so that they can grow to sustainability and contribute to the growth of our economy.

OUR VALUES

- Integrity
- Professionalism
- Commitment
- Respect
- Empowerment
- Teamwork

SERVICES

The centre strives to provide the relevant infrastructure, including a manufacturing environment, where trainees can be effectively and safely trained to cast, manufacture and weld aluminium products.

It also endeavours, through training and mentoring to equip the graduates with the business skills and tools to enable them to establish their own sustainable businesses.

Services include the following:

- Physical space
- Product/process identification
- Access to equipment, machine, tools and computers
- Internet Café
- CAD Design Studio
- Shared administrative services
- Business assistance
- Entrepreneurial culture development
- Technical Training
- Counselling, Coaching and Mentoring
- Technology Transfer
- Marketing and Commercialisation
- Financial matters and funding
- Export readiness
- Access to Government information
- Networking

TARGET MARKET

Pre-incubation

Business idea and vision in the metals industry
English proficiency (important for trainings and development)
Proof of experience or skills in the industry

Incubation

Complete statutory compliance
Proof of sales achieved to date (minimum R12 500.00 per month)
Proof of experience or skills in the industry

The centre will be assisting incubatees which have been categorised as follows:

Low tech

Low tech incubatees are those businesses which are operating aluminium businesses which do not need much equipment for operations. These businesses are mostly informal businesses or entrepreneurs that want to start running their own businesses full time.

High tech

High tech incubatees are those businesses operating in the Engineering field. This includes existing business which are looking at improving the market potential or expanding their operations.

DOORS



D001



D002



D003



D004



D005



D006



D007



D008



D009



D010



D011



D012



D013



D014



D015



D016



D017



D018



D019



D020



D021



D022



D023

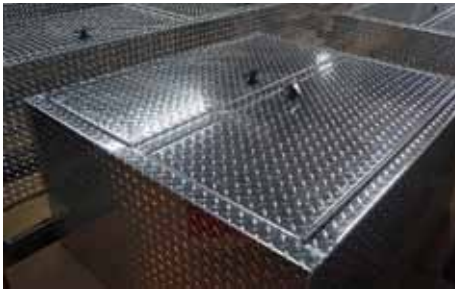


D024



D025

ENGINEERING



EG001



EG002



EG003



EG004



EG005



EG006



EG007



EG008



EG009



EG010



EG011



EG012



EG013



EG014



EG015

FURNITURE



WS001



WS002



WS003



WS004



WS005



WS006



WS007



WS008



WS009



WS010



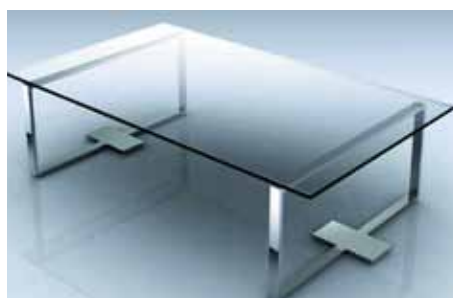
WS011



WS012



WS013



WS014



WS015

FURNITURE



WS0016



WS017



WS018



WS019



WS020



WS021



WS022



WS023



WS024



WS025



WS026



WS027



WS028



WS029



WS030



WS031



WS032



WS033



WS034



WS035

FURNITURE



WS036



WS037



WS038



WS039



WS040



WS041



WS042



WS043



WS044



WS045



WS046



WS047



WS048



WS049



WS050

FURNITURE



WS051



WS052



WS053



WS054



WS055



WS056



WS057



WS058



WS059



WS060



WS061



WS062



WS063



WS064



WS065



WS066

GATES



G001 - Welded



G002 - Welded



G003 - Welded



G004 - Welded



G005 - Welded



G006 - Welded



G007 - Welded



G008 - Welded



G009 - Welded

GATES



G010 - Welded



G011 - Welded



G012 - Welded



G013 - Welded



G014 - Welded



G015 - Welded



G016 - Welded



G017 - Welded



G018 - Welded



G019 - Welded



G020 - Welded



G021 - Welded



G022 - Welded



G023 - Welded



G024 - Welded

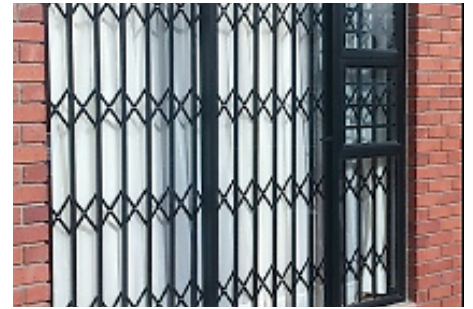
SECURITY GATES & BURGLAR BARS



B001



B002



B003



B004



B005



B006



B007



B008



B009

WINDOWS



W001



W002



W003



W004



W005



W006



W007



W008



W009

WINDOWS



W010



W011



W012



W013



W014



W015



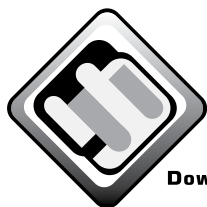
W016



W017



W018



DACT

Downstream Aluminium Centre for Technology

Reg No.: 2005/012145/08

VAT No.: 4240222093

Tel: 035 797 1500

Fax: 035 797 3050

Email: info@dact.co.za

Web: www.dact.co.za

ZCBF Community Park,
South Central Arterial,
Alton North,
Richards Bay

P.O. Box 1746,
Richards Bay 3900
South Africa